

System Design to Order Services

Build Your Dream System in 30-Day

- ✓ System Engineering Expert Group
- ✓ World-class Manufacturing Center
- ✓ Certified Quality Assurance Systems
- ✓ Case Study Sharing
- ✓ Global Reach, Local Touch



ADVANTECH

Enabling an Intelligent Planet

www.advantech.com

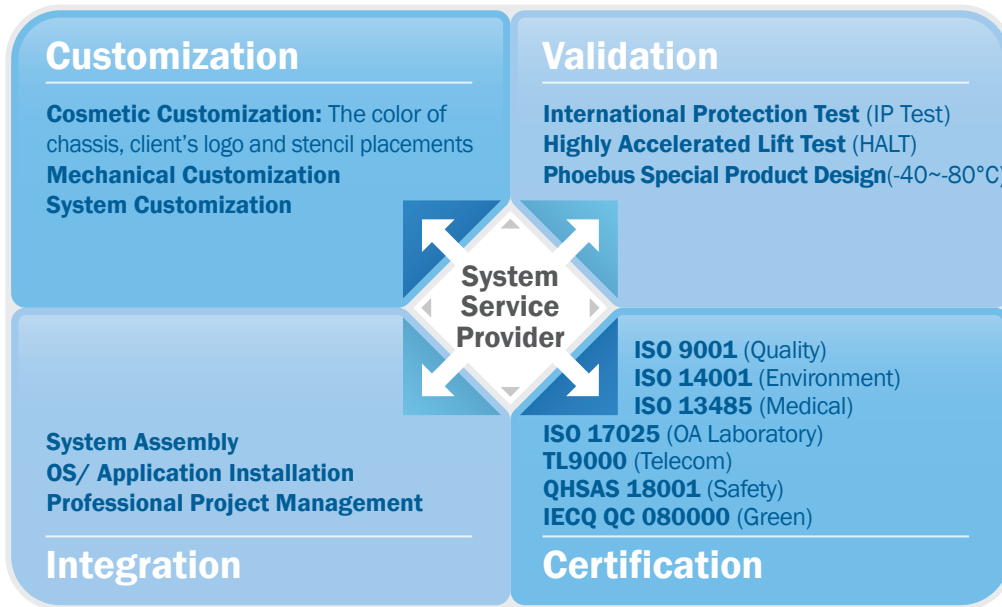
30-Day System Design to Order Service

30-Day Time-to-Market, Build Your Dream Systems

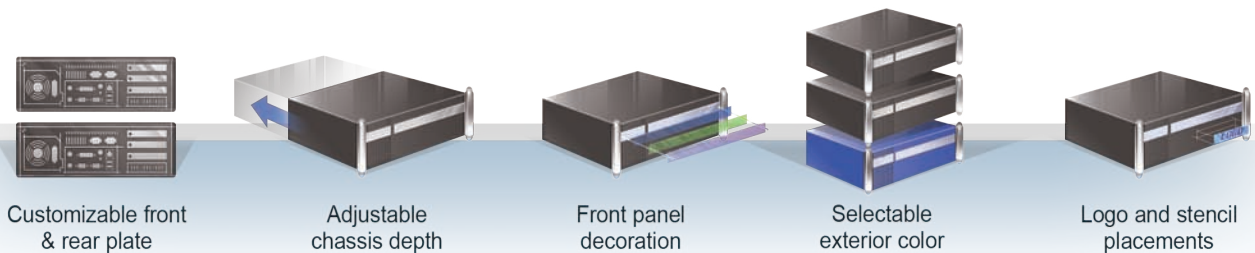
Advantech Design To Order Services (System DTOS) is a design service which provides tailor-made systems or boards to meet specific application requirements through advanced, innovative and world leading technologies, diverse levels of customization, flexibility of manufacture, and global technical & logistical support. Advantech DTOS offers you the advantages of faster project development, lower risk and the assurance of working with a trusted global leader for win-win solutions. With strict project workflow, integrated infrastructure, and highly proficient project development, we promise our customers a quality and speedy 30-Day Design To Order Services.



4-Step System Service Provider



Customize Your Own System in Your Way



Why System DTOS? Why 30-day?

Designed by Advantech Experts

System design should always start from the customer's perspective. To build up a system that precisely matches a customer's application, Advantech professional engineering team as 4-step system service provider always puts the customer first, from system working environment, to ergonomics, to maintenance. The professional engineering team with rich experience from over 100 successful cases make Advantech the dream system builder for your business.

In addition to the R&D design teams, Advantech also includes various experts handling certification, power design, and manufacturing process. These experienced experts play an active role from the very beginning at the design stages; they make sure your own system would be delivered on time.



- Electric Engineer**
Electron Engineers are responsible for circuitry design, power consumption confirmation and electric signal evaluation.
- Mechanical Engineer**
Advantech Mechanical engineers possess broad knowledge and experience in years, and are familiar with all kinds of materials used in computer chassis.
- System Engineer**
Collaborating with professionals from different fields, the system engineers provide the best integration solution to meet the customers' needs.
- Thermal Engineer**
Relying on their practical design experience and industry-leading thermal simulation techniques, we optimize acoustic volume with balanced thermal control.
- Quality Engineer**
Quality engineers are in charge of each delivered system's function and reliability.
- Safety Engineer**
Advantech safety engineers aim at acquiring certifications of every system we made to meet global/local standard.

World-class Manufacture Center

With the dual world-class manufacturing center in Taiwan and China both maintain precise quality control, and offer a full range of production in a timely and cost-effective manner. To maximize the efficiency of operational procedures, we have implemented a cluster manufacturing system within our segmented manufacturing service units. This unique approach enables a direct, simplified, and highly streamlined design- to -manufacturing process.

Manufacturing Centers



ATMC
Taipei, Taiwan 15,744 m²

- Small Volume Production
- Board & System Products
- ODM/OEM Projects
- Engineering Sample Innovation Service



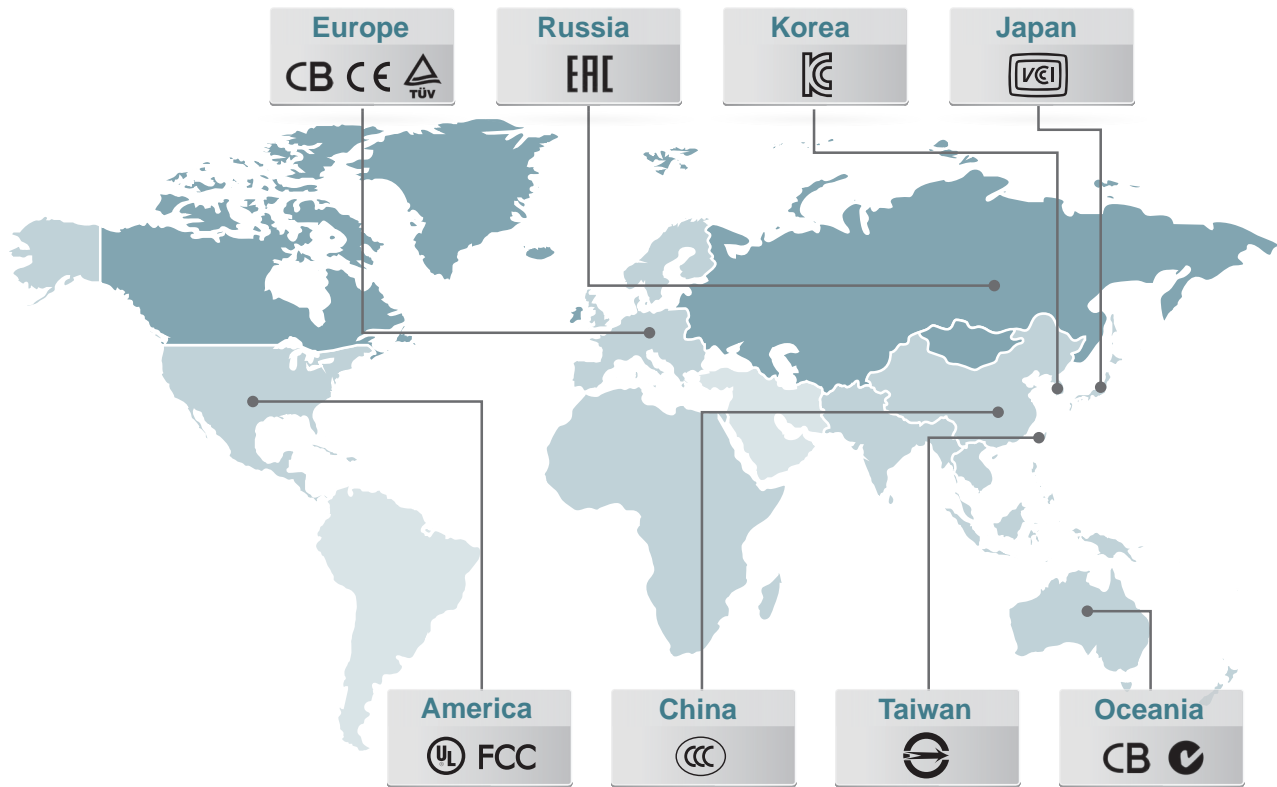
AKMC
Kunshan, China 81,000 m²

- Mid-to-High Volume Production
- Board, Chassis and System Design & Production
- ODM/OEM Projects

Certified, Quality Assurance System

Global Safety and EMC Category

Before delivering the system, Advantech will proceed and run a series of validation and certification tests to assure that each system passes high standard criteria for stable long-term operation and can be widely applied to the global contexts. In any keen, competitive business field, Advantech promises to build your own validated and certified system in 30-Day that assists you to become the pioneer in each industry.



Right System, Right time

Advantech DTOS plays the role as system service provider and offers right system at right time to benefit your business grow in the market. What makes Advantech DTOS a decent service provider is we quickly confirm specifications and timely feedback. We offer fast sample delivery once the system is completely validated and certified. The rapid product time-to-market service is guaranteed and we are thrilled to announce that more than 100 successful stories have been created in industries of medical, retail, automation, transportation, telecommunication, security & video surveillance and others by Advantech DTOS and our partners.



• Quickly confirm specifications and timely feedback



• Fast sample delivery



• Complete consideration and verification



• Rapid product time-to-market



• More than 100 successful stories

Providing Quick and Customized Services for Multimedia Application in 30-Day

A Dedicated System Solution to Fulfill Demanding Requirements



Project

A new wave of consumer behavior is creating dramatic changes in the media landscape to shift away from desktop to handheld applications. In response to such market demands, our customer was developing its next-generation video capturing, encoding, trans-coding and streaming product for multimedia industry while seeking the motherboard and chassis with customized solution to be combined into a web management server so as to broadcast live video through set-to-box, TV, PC, notebook, cell phone, KIOSK, etc. to massive audiences over LAN or WLAN. Due to intense competition in the market, our customer approached us and needed as quick as possible to complete this project in the shortest time, thus making Advantech's customized Design to Order Services (DTOS) to be the best choice to meet its product launch schedule.

Requirements

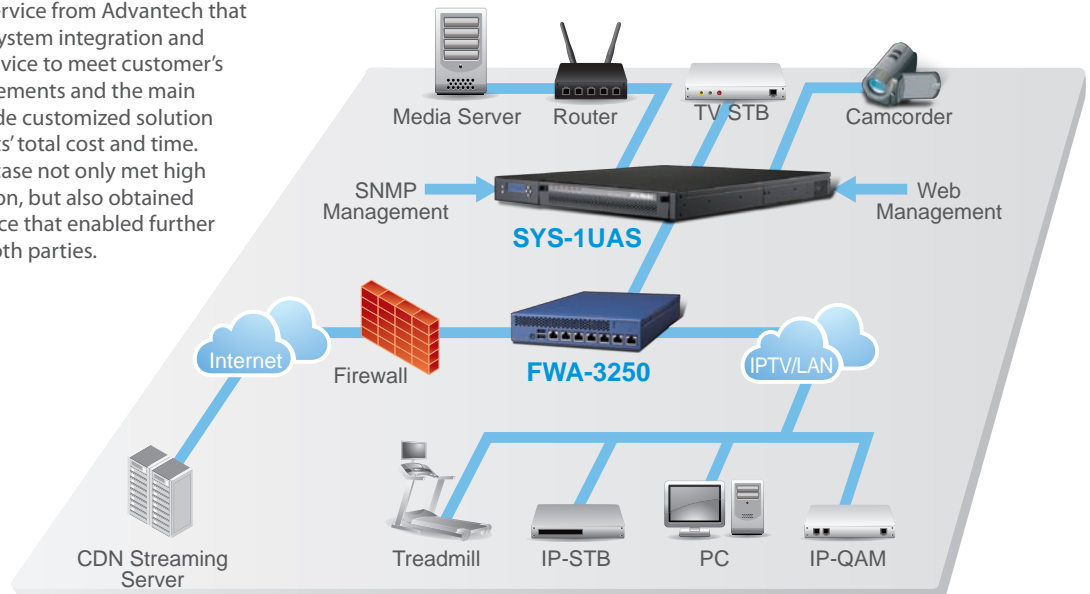
- Certified system that is able to be exported and operated globally
- Reliable system that is easy to install and maintain
- Remotely monitor system that achieves excellent heat dissipation, quiet effect and power saving efficiency.

System

In order to transmit HD video content in real time, high stability was an essential demand to ensure transmission quality without concerning about signal interruption issue. As a gateway, this server would be installed in a higher temperature environment during long-time operation according to the usage analysis and evaluation, and therefore it has to be equipped with a dedicated enclosure with embedded board to reach higher performance and greater reliability. First, supporting lower sound and disturbance free during machine operation to offer a comfortable work situation was a basic need. Secondly, the issue of heat tolerance was the highlight in this case whereas the product with commercial specifications was unable to fulfill customer's requirement unlike industrial ones. In addition, our client's new solution targets were at global markets, and complying with international safety regulations was fundamental for this case. Finally, conducting reliability tests to validate customer's system and acquire government or official approval (which certification) in the limited time was the prerequisite feature for the successful project to save clients' time and expense to the full.

Conclusion

DTOS is a unique service from Advantech that combines in-time system integration and one-stop global service to meet customer's dimensional requirements and the main purpose is to provide customized solution to reduce our clients' total cost and time. The project in this case not only met high customer satisfaction, but also obtained customer acceptance that enabled further collaboration on both parties.



Building a Customs Department Inspection System in 30-Day

The System Service Provider Helped to Decrease Workforce



Project

The goal in designing an ideal system is to create benefits that exceed customer expectations. One of our clients, Chang-I Airport in Singapore recently approached Advantech to request help in designing a specialized system for use by airport customs personnel. The prerequisites called for a stable, durable and high performance platform. The client goal was to reduce the workforce to comply with a request from local government. The new equipment, ready for use by customs officials, needed to be built with an embedded compact system, capable of responding to all demands. It would act as the front line for security and as a first-tier inspection platform, examining incoming international travelers upon arrival. With recent increases in international crime and in light of terrorist attacks, the system is required to process large scale facial recognition scans and capture fingerprint images of each visitor. The information is to be fed to back-end databases for identification and the system has a 24/7 operational requirement. After careful evaluation, Chang-I Airport chose Advantech DTOS as its ideal system service provider, to build and deliver an integrated system for daily operation and maximum performance at minimal cost.

Requirements

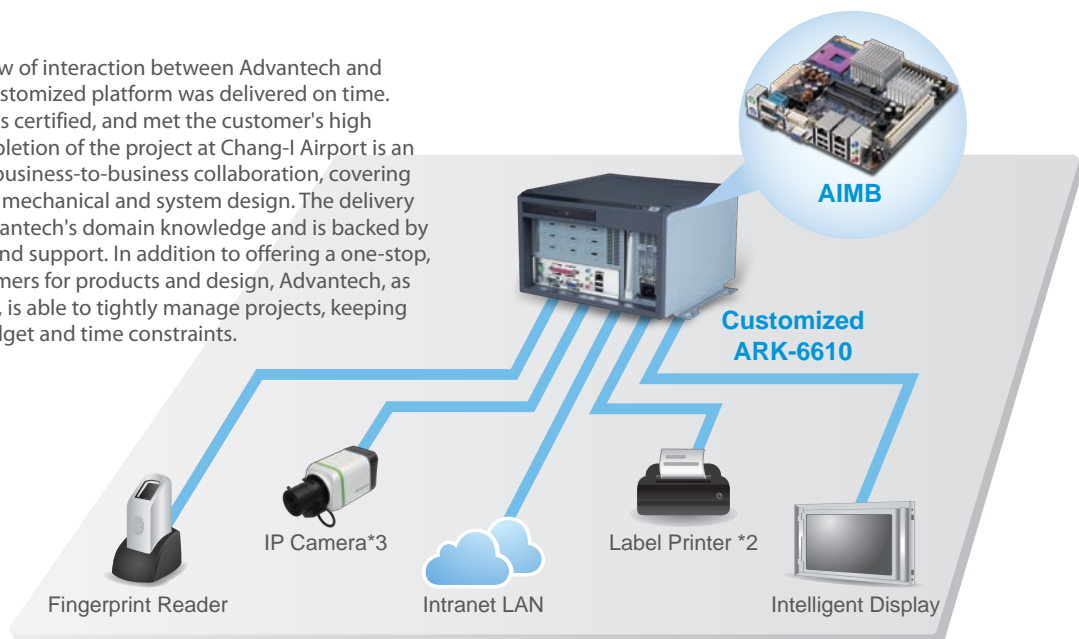
- High performance system that is able to process and storage massive data
- Durable and stable system that operates 24/7
- Fanless system with high resolution imaging analysis

System

Making the customer's requirements a priority is the spirit of Advantech System Design To Order Services (DTOS), and building systems to specification within time limits is its goal. For Chang-I Airport, Advantech DTOS designed a stable, low-noise, high performance system with multiple USB ports linked to a primary screen. Advantech chose an x86 platform for the base system with a high-resolution display for inspection purposes. Based on the requirements from Chang-I Airport, a joint system engineering expert group (JSEEG) made the determination to use Advantech's ARK-6610, assembling the industrial motherboard, with HDD, advanced CPU, riser card and monitor. Before the machine sample was sent out to the client, the product was put through an array of validation tests including functional, environmental and other specialized tests unique to Advantech, to ensure the final delivery was rock solid. In the course of the project, DTOS also considered maximizing heat dissipation, building a noiseless computer, and using power-saving efficient hardware, to meet the industrial regulations and the airport's needs.

Conclusion

After close two-way flow of interaction between Advantech and the client meant the customized platform was delivered on time. The finished system was certified, and met the customer's high expectations. The completion of the project at Chang-I Airport is an example of successful business-to-business collaboration, covering all aspects of cosmetic, mechanical and system design. The delivery by DTOS illustrates Advantech's domain knowledge and is backed by its world class service and support. In addition to offering a one-stop, global service to customers for products and design, Advantech, as a leader in the industry, is able to tightly manage projects, keeping deliverables within budget and time constraints.



Building a Customized Diagnosis System in 30-Day

The Complete Service Provider for Clinical Intelligent System



Project

With increases in the standard of living, the public is becoming more aware of the importance of medical care. Clinical diagnosis and forecasting can be made more precise through the use of advanced technologies. Our client, one of the best known, global healthcare facility providers, contacted Advantech to ask whether we could design a clinical intelligent system solution to meet their needs. An intelligent system for clinical applications enables doctors, nurses and other medical staff to have instant, quick and easy access to all needed patient historical data and personal information. Additionally, the current status of assigned patients is remotely available, and can be managed by medical staff through various digital devices. In this way, medical staff can effectively manage patients and their treatment.

Requirements

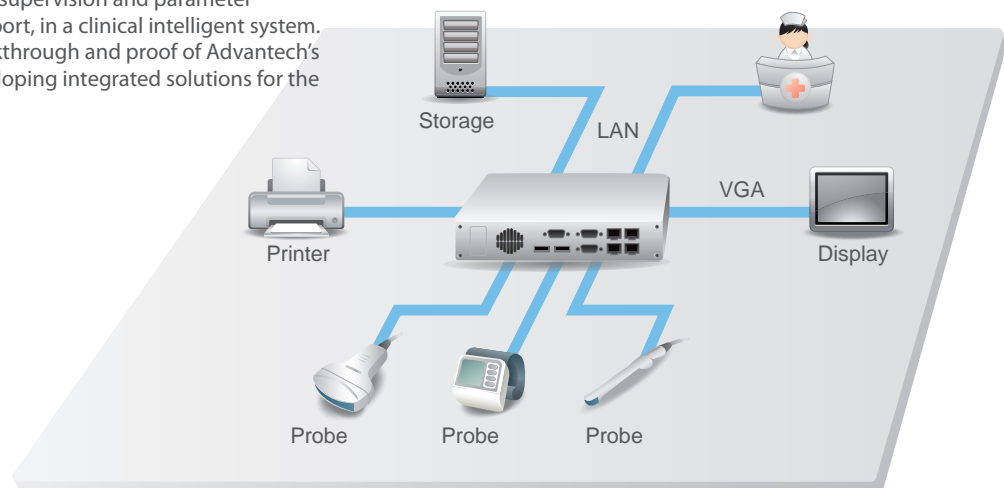
- Customized chassis logo and color to fit in diagnosis room
- Rich I/O, compact system
- Ergonomics design for need of high mobility

System

Ideal system solutions need to be tailored to different scenarios and applications for different clients. For this case, the client requested a stable, certified system that integrated patient information from a variety of data sources, such as data collected by sensors attached to patients or expectant mothers, workflow schedules, and so on. Advantech delivered a durable, high performance embedded system with a compact design, taking into consideration the space constraints of small diagnosis rooms. In addition to space considerations, a joint system expert engineering team looked at designing the system to meet thermal and noise limits during normal operation. The system was ergonomically designed to allow easy movement from room to room, and a customized alarm was built in to sound in the event of a medical emergency. The finished system was delivered in a custom color with the client logo and company image in place on the chassis.

Conclusion

Advantech DTOS collaborated with the client to draw up and develop an IT solution plan offering a transparent platform designed to assist medical staff in making more accurate diagnoses during medical treatment. The finished solution consisted of data integration, supervision and parameter computing with wireless support, in a clinical intelligent system. This system was a major breakthrough and proof of Advantech's strong determination to developing integrated solutions for the medical industry.



Global Reach, Local Touch

Our global presence provides localized reliable customer support service. With customizable after-sales services, including extended warranty, advance replacement, upgrade. We enable an optimized maintenance and support plan around the world within your budget and also keep your investment at peak performance.

Online Technical and Repair Services for Total Lifecycle Support

Our Post-Sales Repair Service is equal in importance to our Design and Manufacturing division. The service represents our commitment to provide comprehensive technical support after delivery of new products.

Web-based eRMA System

This personalized portal system offers real-time RMA status-tracking at all times, anywhere via the Internet. Through our worldwide Customer Support Centers, you get regional technical support and repair services along with a stringent, dependable quality standard.

Best-in-Class Service

The applications engineering team is always ready to assist you. This dedicated group helps to coordinate and track your repair requests. Through our Global Service Centers, we provide you and your customers with a comprehensive range of proven preventive, diagnostic, remedial, and repair services.

Regional Service & Customization Centers

China

Kunshan
86-512-5777-5666

Taiwan

Taipei
886-2-2792-7818

Netherlands

Eindhoven
31-40-267-7000

Poland

Warsaw
48-22-33-23-740 / 741

USA

Milpitas, CA
1-408-519-3898

Worldwide Offices

Greater China

China
800-810-0345
Beijing 86-10-6298-4346
Shanghai 86-21-3632-1616
Shenzhen 86-755-8212-4222
Chengdu 86-28-8545-0198
Hong Kong 852-2720-5118

Taiwan
0800-777-111
Rueiguang 886-2-2792-7818
Yang Guang 886-2-2792-7818
Xindian 886-2-2218-4567
Taichung 886-4-2378-6250
Kaohsiung 886-7-229-3600

Asia Pacific

Japan
0800-500-1055
Tokyo 81-3-6802-1021
Osaka 81-6-6267-1887

Korea
080-363-9494
Seoul 82-2-3663-9494

Singapore
Singapore 65-6442-1000

Malaysia
1800-88-1809
Kuala Lumpur 60-3-7724-3555
Penang 60-4-397-3788
60-4-397-4188

Indonesia
Jakarta 62-21-769-0525

Thailand
Bangkok 66-2-248-3140

India
Bangalore 1800-425-5071
91-80-25450206

Australia
Melbourne 1300-308-531
Sydney 61-3-9797-0100
61-2-9476-9300

Europe

Europe 00800-2426-8080

Germany
Münich 49-89-12599-0
Hilden 49-2103-97-885-0

France
Paris 33-1-4119-4666

Italy
Milano 39-02-9544-961

Benelux & Nordics
Breda 31-76-5233-100
Roosendaal 31-165-550-505

UK
Reading 44-0118-929-4540

Poland
Warsaw 48-22-33-23-740/741

Russia
Moscow 8-800-555-01-50
7-495-232-1692

Americas

North America
1-800-866-6008
1-888-576-9668
Cincinnati 1-513-742-8895
Milpitas 1-408-519-3898
Irvine 1-949-420-2500

South America
Mexico 52-55-6275-2777

Brazil
São Paulo 0800-770-5355
55-11-5592-5355

ADVANTECH

Enabling an Intelligent Planet

www.advantech.com

Please verify specifications before ordering. This guide is intended for reference purposes only.

All product specifications are subject to change without notice.

No part of this publication may be reproduced in any form or by any means, electronic, photocopying, recording or otherwise,

without prior written permission of the publisher.

All brand and product names are trademarks or registered trademarks of their respective companies.

© Advantech Co., Ltd. 2014

860000105